



Atlantic Minerals Limited Quarry Operations in Port Au Port



Producers of:

Chemical Grade Limestone - Chemical Grade Dolomite - Construction Aggregates



Table of Contents

- Safety Moment
- Purpose of Meeting
- Current Port Au Port Quarry Operations
- Location of Atlantic Minerals Limited Operations
- Economics
- Reg. # 1779 - Lower Cove Limestone Mine Lease Expansion
- Legislated Responsibilities
- Atlantic Minerals Limited Commitment
- Questions



Safety Moment

- If you have to leave the building:
 - Exit the building through the front entrance.
 - If the front entrance is blocked exit through the rear exit door or a window.
 - Muster Station is located on the far side of the parking area outside the front entrance.
 - Meeting point for emergency vehicles is at street entrance.
 - Stay at the muster station until further instructions.



Purpose of Meeting

The intention of this meeting is to ensure all communities had an equal opportunity to express any concerns so that as a group we can work toward providing solutions that would satisfy everyone.

Producers of:

Chemical Grade Limestone - Chemical Grade Dolomite - Construction Aggregates



Current Port Au Port Quarry Operations

- In 1996 Atlantic Minerals Limited purchased 2,900 acres, from Coopers and Lybrand Trustees in Bankruptcy for Newfoundland Resources and Mining. The quarry had known resources, and AML has been operating continuously since that time.
- This quarry produces high calcium limestone and dolomite, and some construction aggregate products that are shipped, in their unaltered natural state, within Canada and to the United States, South America and Europe.
- The quarry averaged 2.25 million mt in production per year over the last 5 years.
- Since the quarry's purchase in 1996, Atlantic Minerals Limited has paid annually for all applicable mining leases and mineral claims on adjacent lands, in order to provide materials for its present and future operations.



Location of Atlantic Minerals Limited Operations



Producers of:
Chemical Grade Limestone - Chemical Grade Dolomite - Construction Aggregates



Economics

- Atlantic Minerals Limited currently has 138 employees working at its operations in Lower Cove, and operates on a 24/7 schedule, 9 months of the year, with 3 months of plant maintenance and ship loading during winter months.
- 98.5% of employees are from the Port Au Port Peninsula and greater Bay St. George area.
- The operation pays substantial amounts in payroll tax, Provincial Mining taxes and Provincial Income tax annually.
- AML creates local indirect spinoff jobs, subcontractors (30 plus per year), suppliers, shipping, housing, shopping, restaurants, etc.
- Each year Atlantic Minerals Limited invests significantly in capital works, maintenance and equipment upgrades to insure the facility remains world class and competitive in the global economy.

Producers of:

Chemical Grade Limestone - Chemical Grade Dolomite - Construction Aggregates



Atlantic Minerals Limited Employees by Community and Area		
Sheaves Cove	6	
Cape St. George	15	
Mainland	2	
Three Rock Cove	4	
Lourdes	3	
West Bay	10	
Winter House/Black Duck Brook	1	
Piccadilly	10	
Lower Cove/Ship Cove/Jerry's Nose	17	
Abraham's Cove/Campbell's Creek	1	
Port au Port West and East	13	
Total Number of Employees Living in Port Au Port		82
Kippens / Stephenville	39	
Stephenville Crossing/St. George's/ Mattis Point/Flat Bay	15	
Corner Brook/Pasadena	2	
Total Number of Employees at Atlantic Minerals Limited		138



Atlantic Minerals Limited – Employees

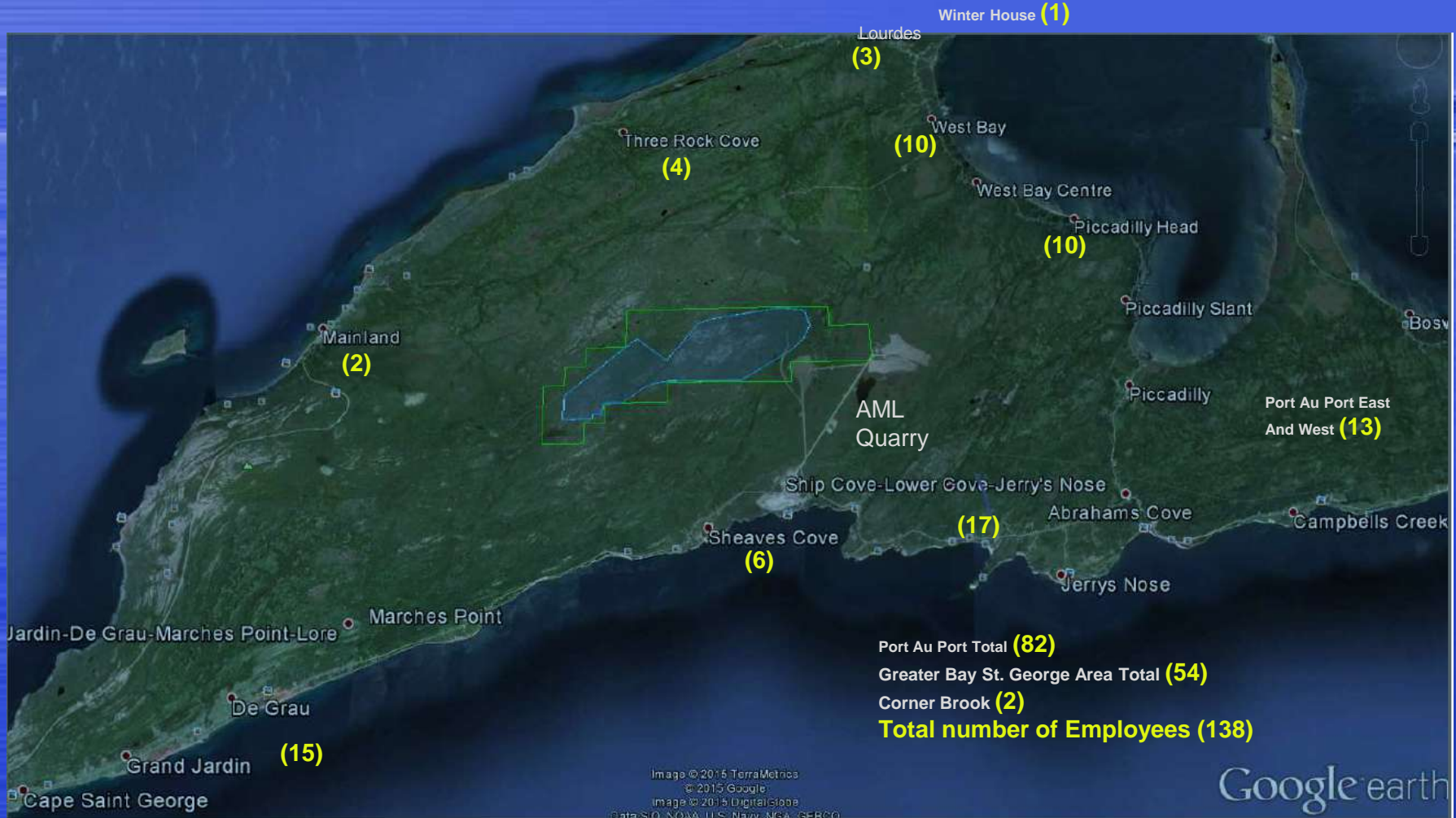


Image © 2015 TerraMetrics
© 2015 Google
Image © 2015 DigitalGlobe
Data SIO, NOAA, U.S. Navy, NGA, GEBCO

Google earth

Producers of:
Chemical Grade Limestone - Chemical Grade Dolomite - Construction Aggregates



Reg. # 1779 - Lower Cove Limestone Mine Lease Expansion

- In 2013 Atlantic Minerals Limited determined, through geological testing and diamond drilling, that it had only 2-3 years of viable high calcium limestone reserves left before it was exhausted in the current quarry.
- The 20 year mineral claims for Atlantic Minerals Limited's reserves outside of its current operations are nearing the expiry under the Mining Act.
- Due to these two reasons, on 26 January 2015 Atlantic Minerals Limited registered to expand its limestone and dolomite leases on the Port au Port Peninsula, by 754 hectares, to the west and northwest of its current operations.
- Expansion will gain access to adjacent high calcium limestone reserves in order to extend the quarry's life for an estimated 45-50 years and to continue to provide significant economic benefits to the region.



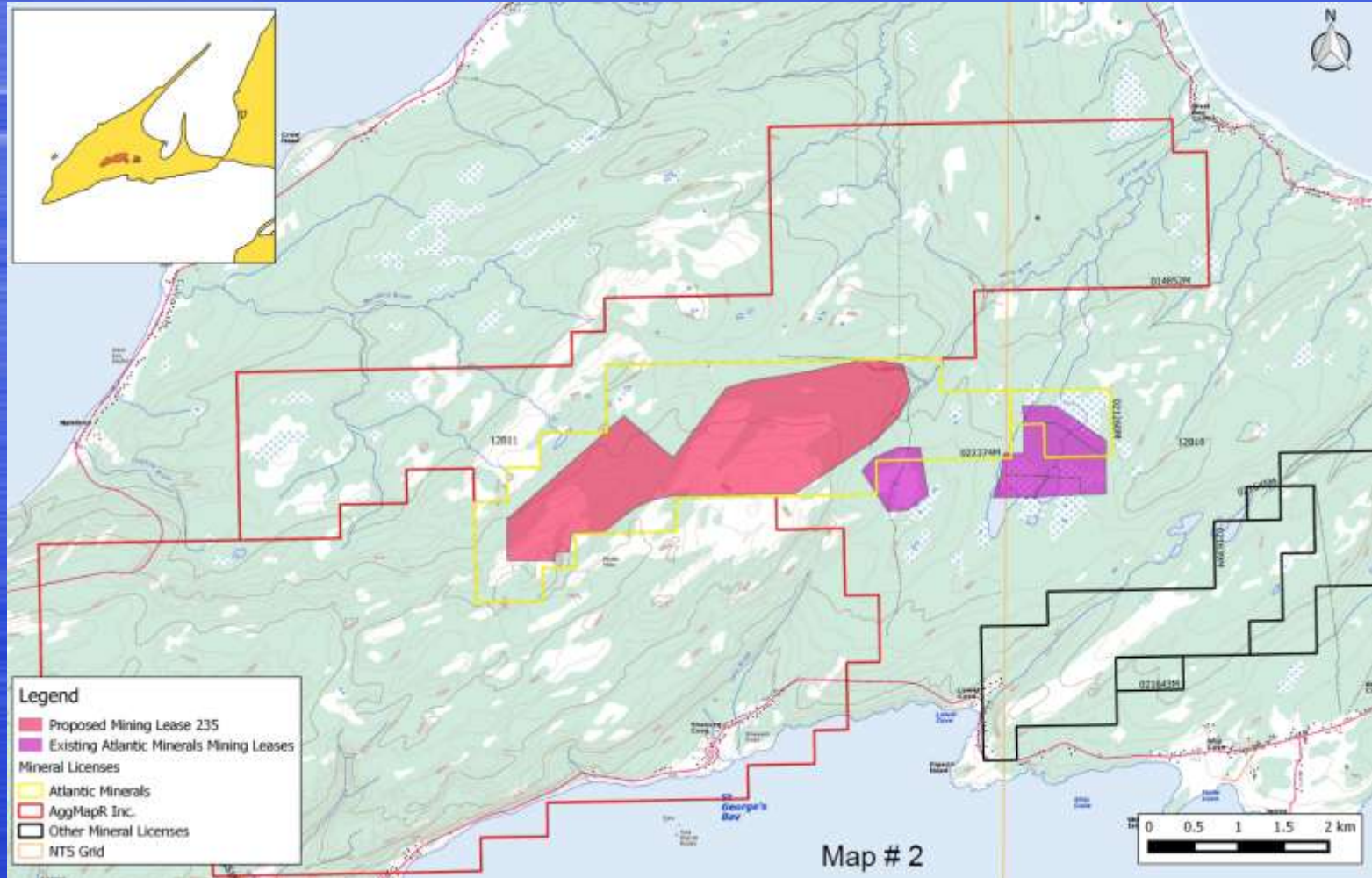
Atlantic Minerals Limited – Port Au Port



Producers of:
Chemical Grade Limestone - Chemical Grade Dolomite - Construction Aggregates



Mineral Claims and Leases in Port Au Port





Legislated Responsibilities

- AML meets or exceeds all Government regulations and adheres to all environmental, mining, OH&S, DFO and Transport Canada regulations in its activities.

Producers of:

Chemical Grade Limestone - Chemical Grade Dolomite - Construction Aggregates



Atlantic Minerals Limited Commitment

Atlantic Minerals Limited is fully committed to the protection of the environment and the growth and health of its employees and local communities.

We are also committed to working with our neighbours in a respectful environment in order to address as many of your concerns as possible.

Progress have been made, and will continue to be made, until we reach a perfect balance between what we do and the environment we do it in.

Producers of:

Chemical Grade Limestone - Chemical Grade Dolomite - Construction Aggregates



Concerns?

